

# Welcome to the University of Oxford

For more than 800 years colleges have existed around the city of Oxford. They began as medieval halls of residence for students under the supervision of a Master. The oldest colleges, University, Balliol and Merton, were founded in the late 13th century. Green Templeton College is the newest and was established in 2008. Today, 38 colleges are related to the University in a type of federal system.

Colleges are communities in which students live and study. They are the main focus of their everyday lives. The college is responsible for students' academic progress through the tutorial system, and for their welfare. Each college has its own sports facilities and teams. In addition, there is the opportunity to join University teams and take part in competitions such as the world-famous Boat Race.

Each college offers most of the subjects taught at the University, so at any college there will be students studying different subjects such as law, medicine and maths.

All colleges accept male and female students. All Souls is primarily an academic research institution and traditionally has no undergraduates. Harris Manchester recruits mature students. Linacre, Nuffield, St Antony's, St Cross, Wolfson and Green Templeton admit only graduate students. Kellogg College supports the University's lifelong learning work through opportunities for adult, part-time and professional development students.

The Department for Continuing Education offers more than 800 short or part-time study courses. Students can study in Oxford, in the region or online, for pleasure and/or for an Oxford qualification. For more information about lifelong learning at Oxford, you can pick up a prospectus from Rewley House, Wellington Square or telephone 01865 270360.



More information about the University can be found in *University of Oxford: The Official Guide*, available to purchase from the Bodleian Library Shop, local bookshops and the Visitor Information Centre for £4.99

## SHOPPING AT THE UNIVERSITY OF OXFORD

### THE UNIVERSITY OF OXFORD SHOP



The official University of Oxford Shop offers a wide range of stylish gifts, clothing, jewellery and more...



106 High Street, Oxford, OX1 4BW

Tel: 01865 247414

[www.OUshop.com](http://www.OUshop.com)

### Visit the Bodleian Library Shop



Set in the tranquil and historic setting of the Old Schools Quadrangle, the Bodleian Shop is full of exclusively designed gifts inspired by the Libraries' vast collections.

[www.bodleianshop.co.uk](http://www.bodleianshop.co.uk) Broad Street, Oxford OX1 3BG



Produced by the University of Oxford Public Affairs Directorate, University Offices, Wellington Square, Oxford OX1 2JD Tel: 01865 270010 [www.ox.ac.uk/publicaffairs](http://www.ox.ac.uk/publicaffairs) March 2013

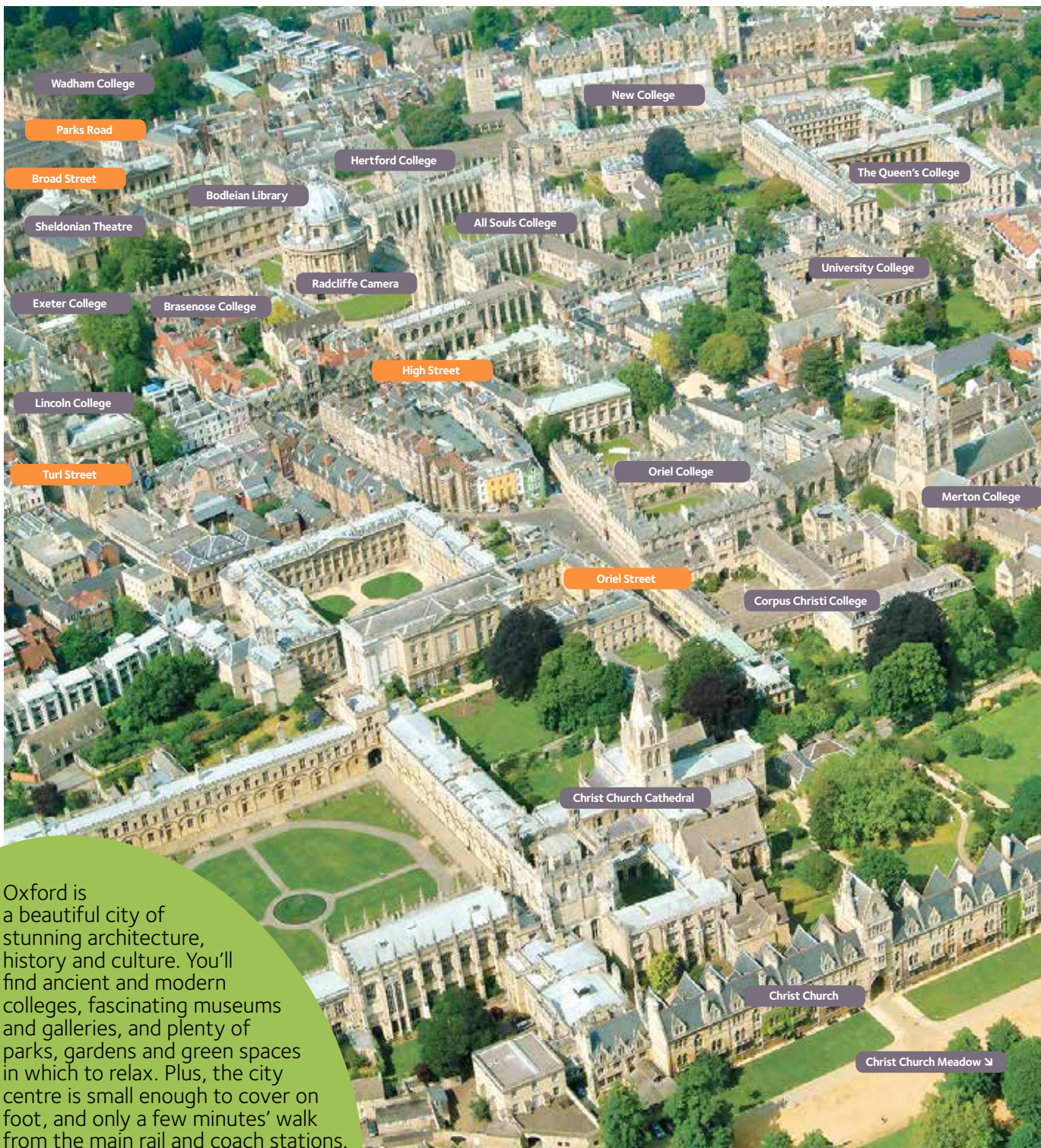
Pictures from: Greg Smolonski, Rob Judges and James Whitaker  
Cover: Rob Judges – The Bridge of Sighs, Hertford College

FREE OFFICIAL MAP

THE UNIVERSITY OF OXFORD

# EXPLORE





Oxford is a beautiful city of stunning architecture, history and culture. You'll find ancient and modern colleges, fascinating museums and galleries, and plenty of parks, gardens and green spaces in which to relax. Plus, the city centre is small enough to cover on foot, and only a few minutes' walk from the main rail and coach stations.

# Visitor Information Centre

 See map

Tourist information, accommodation service, tickets, guided walking tours, what's on, maps, guides, souvenirs, bureau de change.

Opening times:

Monday to Saturday: 9.30–17.00

Sundays and Bank Holidays: 10.00–15.30

15–16 Broad Street, Oxford OX1 3AS

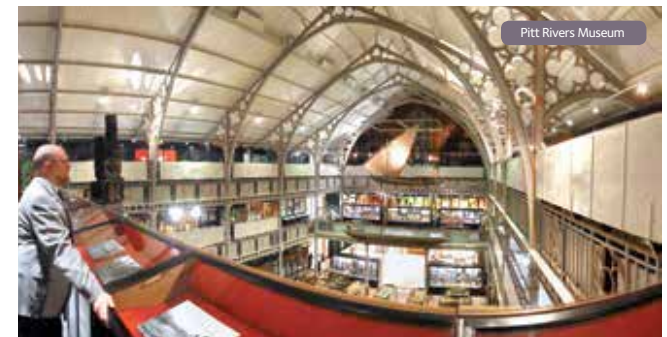
Tel: 01865 252200 Fax: 01865 240261

Email: [info@visitoxfordshire.org](mailto:info@visitoxfordshire.org)

[www.visitoxfordandoxfordshire.com](http://www.visitoxfordandoxfordshire.com)



Antony Gormley statue overlooking Broad Street



Pitt Rivers Museum

## Disabled Access



Many of our buildings are very old and the collegiate University is making reasonable adjustments wherever possible to improve accessibility. The Access Guide at [www.admin.ox.ac.uk/access/](http://www.admin.ox.ac.uk/access/) provides information about accessibility issues, but to make the most of your visit we suggest you contact the college, museum etc. directly.

Explore the University of Oxford



Tree-like sculpture 'Y' by Turner Prize-winning artist Mark Wallinger, in the grounds of Magdalen College

# Visiting the colleges of the University of Oxford



**1 All Souls College**  
High Street, tel: 279379 [www.all-souls.ox.ac.uk](http://www.all-souls.ox.ac.uk)

**Open:** Mon–Fri 14.00–16.00. Closed in August, at Easter and from 22 Dec to 3 Jan  
**Charge:** Free  
**Note:** Maximum 6 people in a group

**2 Balliol College**  
Broad Street, tel: 277777 [www.balliol.ox.ac.uk](http://www.balliol.ox.ac.uk)

**Open:** Usually open 10.00–17.00 or dusk (whichever is earlier)  
**Charge:** Adults from £2, concessions and students from £1

**3 Blackfriars** Not open to the public

**4 Brasenose College**  
Radclyffe Square, tel: 277830 [www.bnc.ox.ac.uk](http://www.bnc.ox.ac.uk)

**Open:** Mon–Fri 10.00–11.30  
Sat–Sun 9.30–11.00  
14.00–16.30 (17.00 in summer)  
**Charge:** £2 per person  
**Note:** Groups must book in advance. Maximum 40 people in a group.

**5 Champion Hall**  
Not open to the public

**6 Christ Church**  
St Aldate's, tel: 286573, 276492 [www.chch.ox.ac.uk](http://www.chch.ox.ac.uk)

**Open:** Daily except Christmas Day  
Mon–Sat 10.00–16.30, Sun 14.00–16.30  
Christ Church Cathedral closes at 16.30  
Please see the Cathedral website [www.chch.ox.ac.uk/cathedral](http://www.chch.ox.ac.uk/cathedral) for a schedule of daily services.  
**Charge:** July–August £8.50, concessions £7  
April–June £8, concessions £6.50  
September–March £7, concessions £5.50  
**Note:** Large parties may be split. Advance booking for groups is recommended. Special 'behind the scenes' tours are available if booked in advance. The visitor entrance to Christ Church (Meadow Gate) is accessed from St Aldate's through the Memorial Garden and Christ Church Meadow.

**7 Corpus Christi College**  
Merton Street, tel: 276700 [www.ccc.ox.ac.uk](http://www.ccc.ox.ac.uk)

**Open:** 13.30–16.30  
**Charge:** Free  
**Note:** Groups (max 20) must book in advance and be accompanied by a Blue Badge Guide

**8 Exeter College**  
Turl Street, tel: 279600 [www.exeter.ox.ac.uk](http://www.exeter.ox.ac.uk)

**Open:** Daily 14.00–17.00  
**Charge:** Free  
**Note:** Maximum 15 people in a group

**9 Green Templeton College**  
Woodstock Road, tel: 274770 [www.gtc.ox.ac.uk](http://www.gtc.ox.ac.uk)

**Open:** By appointment only  
**Note:** Maximum 20 people in a group  
Graduate college

**10 Harris Manchester College**  
Mansfield Road, tel: 271006 [www.hmc.ox.ac.uk](http://www.hmc.ox.ac.uk)

**Open:** Chapel only  
Mon–Fri 10.00–17.30, Sat 9.00–12.00  
**Charge:** Free, donations welcome  
**Note:** Groups must book in advance

**11 Hertford College**  
Catte Street, tel: 279400 [www.hertford.ox.ac.uk](http://www.hertford.ox.ac.uk)

**Open:** Daily 14.00–16.30  
**Charge:** Free  
**Note:** Maximum 10 people in a group. Larger groups must book in advance.

**12 Jesus College**  
Turl Street, tel: 279700 [www.jesus.ox.ac.uk](http://www.jesus.ox.ac.uk)

**Open:** Daily 14.00–16.30  
**Charge:** Adults £2, seniors and children over 5 £1  
**Note:** Maximum 20 people in a group. Groups must book in advance.

**13 Keble College**  
Parks Road, tel: 272727 [www.keble.ox.ac.uk](http://www.keble.ox.ac.uk)

**Open:** Winter 10.00–17.00, Summer 10.00–19.00  
**Charge:** Free  
**Note:** Guided tours and groups of 10 or more must book in advance

**14 Kellogg College**  
60–62 Banbury Road, tel: 612000 [www.kellogg.ox.ac.uk](http://www.kellogg.ox.ac.uk)

**Open:** Mon–Fri 9.00–17.00  
**Charge:** Free  
**Note:** Graduate college committed to flexible learning

**15 Lady Margaret Hall**  
Norham Gardens, tel: 274300 [www.lmh.ox.ac.uk](http://www.lmh.ox.ac.uk)

**Open:** 10.00–17.00  
**Charge:** Free

**16 Linacre College**  
St Cross Road, tel: 271650 [www.linacre.ox.ac.uk](http://www.linacre.ox.ac.uk)

**Open:** By appointment only  
**Note:** Graduate college

**17 Lincoln College**  
Turl Street, tel: 279800 [www.linc.ox.ac.uk](http://www.linc.ox.ac.uk)

**Open:** Mon–Fri 14.00–17.00, Sat–Sun 11.00–17.00  
**Charge:** Free

**18 Magdalen College**  
High Street, tel: 276000 [www.magd.ox.ac.uk](http://www.magd.ox.ac.uk)

**Open:** Oct–June 13.00–18.00 or dusk (whichever is earlier)  
July–Sept 12.00–19.00  
**Charge:** Adults £5; concessions £4; family ticket (2 adults and 3 children) £14, includes leaflet available in several languages.  
Entry is free to Oxford residents, Bodleian and Alumni card holders +1 guest.  
July–Sept 18.00 daily; guided tour of the college (c. 45 minutes), £6 per person  
**Note:** Maximum 20 people in a group

The information given in this leaflet is intended for guidance only. Opening hours are subject to functions, examinations, conferences, holidays, etc., and charges are subject to review.

You are advised to check opening times and admission charges in advance. Groups should book in advance and all visitors should report to the Lodge on arrival. We want you to enjoy your visit, but please remember that our colleges are places of residence, work and study, and you are asked not to enter staircases, college rooms and areas marked as private. Dogs, except guide dogs, are not allowed in colleges.

### 19 Mansfield College

Mansfield Road, tel: 270999  
[www.mansfield.ox.ac.uk](http://www.mansfield.ox.ac.uk)  
Open: Mon–Fri 9.00–17.00  
Charge: Free

### 20 Merton College

Merton Street, tel: 276310 [www.merton.ox.ac.uk](http://www.merton.ox.ac.uk)  
Open: Mon–Fri 14.00–17.00 (or dusk),  
Sat–Sun 10.00–17.00 (or dusk)  
Charge: By appointment only. Free to  
University members and alumni (and  
up to three guests). Guided tours of  
college and medieval library £5 per  
person (summer only).  
Note: Groups of more than 10 must book  
in advance

### 21 New College

New College Lane, tel: 279555  
[www.new.ox.ac.uk](http://www.new.ox.ac.uk)  
Open: Easter–Oct 11.00–17.00 (via New  
College Lane Gates),  
Oct–Easter 14.00–16.00 (via Holywell  
Street Gates)  
Charge: Adults £3; seniors, children under 16  
and full time students £2 (applies only  
from Easter to October)  
Entry is free to Oxford residents  
Note: Maximum 20 people in a group. Larger  
groups will need to split

### 22 Nuffield College

New Road, tel: 278500 [www.nuffield.ox.ac.uk](http://www.nuffield.ox.ac.uk)  
Open: Mon–Fri 9.00–17.00  
Charge: Free  
Note: Maximum six people in a group  
Graduate college

### 23 Oriol College

Oriol Square, tel: 276555 [www.oriol.ox.ac.uk](http://www.oriol.ox.ac.uk)  
Open: 14.00–17.00 or dusk (whichever is  
earlier). Closed in Trinity (Summer) term  
Charge: Adults £2; concessions £1  
Guide books are available at £1 each  
Note: Maximum 12 people in a group

### 24 Pembroke College

Pembroke Square, tel: 276444 [www.pmb.ox.ac.uk](http://www.pmb.ox.ac.uk)  
Open: 10.00–17.00  
Charge: Free (guide leaflet available for £1)  
Note: Admission at discretion of duty porter.  
Groups (maximum 20 people) to be  
accompanied by a Blue Badge Guide  
and only by advance arrangement.

### 25 The Queen's College

High Street, tel: 279120 [www.queens.ox.ac.uk](http://www.queens.ox.ac.uk)  
Open: By appointment only  
Charge: Free  
Note: Groups only, must be accompanied by  
a Blue Badge Guide booked through  
the Visitor Information Centre

### 26 Regent's Park College

Not open to the public

### 27 St Anne's College

Woodstock Road, tel: 274800 [www.st-annes.ox.ac.uk](http://www.st-annes.ox.ac.uk)  
Open: 9.00–17.00  
Charge: Free

### 28 St Antony's College

Woodstock Road, tel: 284700 [www.sant.ox.ac.uk](http://www.sant.ox.ac.uk)  
Open: By appointment only  
Note: Graduate college

### 29 St Benet's Hall

Not open to the public

### 30 St Catherine's College

Manor Road, tel: 271700 [www.stcatz.ox.ac.uk](http://www.stcatz.ox.ac.uk)  
Open: Daily 9.00–17.00  
Charge: Free  
Note: Advance booking is required for groups  
of 10 or more. Please contact the Lodge.

### 31 St Cross College

St Giles, tel: 278490 [www.stx.ox.ac.uk](http://www.stx.ox.ac.uk)  
Open: By appointment only  
Note: Graduate college

### 32 St Edmund Hall

Queen's Lane, tel: 279000 [www.seh.ox.ac.uk](http://www.seh.ox.ac.uk)  
Open: Daily 10.00–16.00  
Charge: Free  
Note: Maximum 12 people in a group.  
Larger groups by appointment.

### 33 St Hilda's College

Cowley Place, tel: 276884 [www.st-hildas.ox.ac.uk](http://www.st-hildas.ox.ac.uk)  
Open: By appointment only  
Charge: Free

### 34 St Hugh's College

St Margaret's Road, tel: 274900  
[www.st-hughs.ox.ac.uk](http://www.st-hughs.ox.ac.uk)  
Open: 10.00–16.00  
Charge: Free  
Note: Advance booking is required for groups  
of six or more

### 35 St John's College

St Giles', tel: 277300 [www.sjc.ox.ac.uk](http://www.sjc.ox.ac.uk)  
Open: 13.00–17.00 or dusk (if earlier)  
Charge: Free  
Note: Maximum 14 in a group, accompanied  
by a guide. Larger groups will be split.

### 36 St Peter's College

New Inn Hall Street, tel: 278900  
[www.spc.ox.ac.uk](http://www.spc.ox.ac.uk)  
Open: 10.00–17.00  
Charge: Free; donations welcome  
Note: Advance booking is required for groups  
of five or more

### 37 St Stephen's House

16 Marston Street, tel: 613500  
[www.ssho.ox.ac.uk](http://www.ssho.ox.ac.uk)  
Open: 14.00–16.00 for church, cloisters  
and chapel  
Charge: Free; donations welcome  
Note: Please contact the College Secretary

### 38 Somerville College

Woodstock Road, tel: 270600  
[www.some.ox.ac.uk](http://www.some.ox.ac.uk)  
Open: 14.00–16.30  
Charge: Free; donations welcome  
Note: Large groups must book in advance

### 39 Trinity College

Broad Street, tel: 279900 [www.trinity.ox.ac.uk](http://www.trinity.ox.ac.uk)  
Open: Term Time: Mon–Fri 09.30–12.15,  
13.30–16.00  
Sat–Sun (during term) 13.00–16.00  
Sat–Sun (out of term) 09.30–16.00,  
Spring / summer open till dusk  
Charge: Adults £2, seniors and children £1  
(includes booklet). No charge for group  
leaders / teachers accompanying school  
groups (group only charged)

Note: Groups of 25+ must be accompanied  
by a tour guide.

### 40 University College

High Street, tel: 276602 [www.univ.ox.ac.uk](http://www.univ.ox.ac.uk)  
Note: Entry for groups by prior arrangement  
with the Domestic Bursar. Entry  
for individuals and families at the  
discretion of the Lodge Porter.

### 41 Wadham College

Parks Road, tel: 277900 [www.wadham.ox.ac.uk](http://www.wadham.ox.ac.uk)  
Open: Term time 13.00–16.15  
Vacation 10.30–11.45, 13.00–16.15  
Charge: Free  
Note: Groups must book in advance and be  
accompanied by a Blue Badge Guide

### 42 Wolfson College

Linton Road, tel: 274100 [www.wolfson.ox.ac.uk](http://www.wolfson.ox.ac.uk)  
Open: Daylight hours  
Charge: Free  
Note: Groups should notify the Lodge in  
advance of their visit. Graduate college

### 43 Worcester College

Worcester Street, tel: 278300 [www.worc.ox.ac.uk](http://www.worc.ox.ac.uk)  
Open: Daily 14.00–17.00  
Charge: Free  
Note: Maximum eight people in a group

### 44 Wycliffe Hall

Not open to the public

# Museums, University buildings and other places of interest

### A Ashmolean Museum

Beaumont Street, tel: 278000  
[www.ashmolean.org](http://www.ashmolean.org)  
Open: Tue–Sun 10.00–18.00  
Closed Mondays  
Bank Holiday Mondays 10.00–18.00  
Charge: Free  
Note: For group booking, tel 278015

### B Bate Collection of Musical Instruments

Faculty of Music, St Aldate's, tel: 276139  
[www.bate.ox.ac.uk](http://www.bate.ox.ac.uk)  
Open: Mon–Fri 14.00–17.00,  
Sat (term time only) 10.00–12.00  
Charge: Free

### C Bodleian Library

Broad Street, tel: 287400 [www.bodleian.ox.ac.uk](http://www.bodleian.ox.ac.uk)  
Email: [tours@bodleian.ox.ac.uk](mailto:tours@bodleian.ox.ac.uk)  
Open: Mon–Fri 9.00–17.00,  
Sat 9.00–16.30, Sun 11.00–17.00  
Free access to the Old Schools  
Quadrangle, Exhibition Room and  
Shop. Daily admission to the Divinity  
School. Multi-language audio tours  
available. Daily guided tours of the  
library, including Duke Humfrey's  
Library, last 30 or 60 minutes. 90 minute  
tours on Wednesdays and at weekends  
also available. Groups need to book  
in advance. See website for bookings  
and ticket prices. Admission free to  
members of the University (students  
and staff), Alumni, Bodleian cardholders  
and Friends of the Bodleian. Up to four  
guests will also be admitted free.

### D Botanic Garden

High Street, tel: 286690  
[www.botanic-garden.ox.ac.uk](http://www.botanic-garden.ox.ac.uk)  
Open: Nov–Feb 9.00–16.00 (last admission  
15.15), Mar, Apr, Sept, Oct 9.00–17.00  
(last admission 16.15), May–Aug  
9.00–18.00 (last admission 17.15)  
Adult day ticket £4.50, concessions  
£3 (annual season ticket £15.50,  
concessions £13). Entry is free to  
children in full-time school education  
(when accompanied by a family  
member), registered disabled visitors  
and their carers, University and OUP  
employees, Oxford and Oxford Brookes  
students.

### J University Church of St Mary the Virgin

High Street, tel: 279111  
[www.university-church.ox.ac.uk](http://www.university-church.ox.ac.uk)  
Offers excellent panoramic views of Oxford  
Open: Mon–Sat 9.00–17.00 (July/Aug 18.00)  
Sun 12.00–17.00 (July/Aug 18.00)  
Coffee shop with garden, serving  
organic food, 9.30–18.00  
Charge: Charge to climb tower – see church for  
details  
Note: Entrance to the church is free. Principal  
Sunday service is Eucharist at 10.30

### E Christ Church Picture Gallery

Entrance via Oriol Square, tel: 276172  
[www.chch.ox.ac.uk/gallery](http://www.chch.ox.ac.uk/gallery)  
Open: Gallery closed Tuesdays Oct–June  
October–May: Mon, Wed–Sat 10.30–  
13.00, 14.00–16.30, Sun 14.00–16.30  
June: Mon, Wed–Sat 10.30–17.00, Sun  
14.00–17.00  
July–September: Mon–Sat  
10.30–17.00, Sun 14.00–17.00  
Charge: Adults £3, concessions £2  
Note: If you pay to visit Christ Church, you  
are entitled to a 50% reduction on  
the Gallery entrance charge.

### F Museum of the History of Science

Broad Street, tel: 277280 [www.mhs.ox.ac.uk](http://www.mhs.ox.ac.uk)  
Open: Tue–Fri 12.00–17.00,  
Sat 10.00–17.00, Sun 14.00–17.00  
Charge: Free  
Note: Advance booking for groups of 15+

### G OUP Bookshop

116/117 High Street, tel: 242913  
Open: Mon–Sat 9.00–17.30,  
Wed 9.30–17.30, Sun 12.00–17.00

### H Pitt Rivers Museum

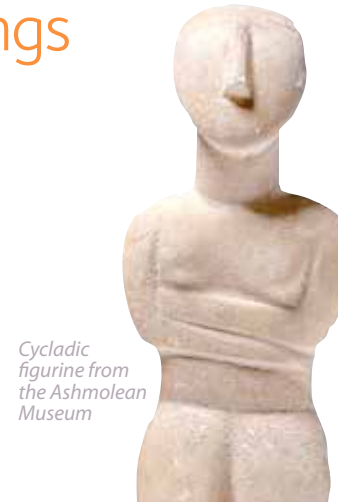
Parks Road, tel: 270927 [www.prm.ox.ac.uk](http://www.prm.ox.ac.uk)  
Entry is still via the Museum of Natural History  
during ongoing building works  
Open: Tues–Sun and Bank Holiday Mondays  
10.00–16.30, Mon 12.00–16.30  
Check website for Christmas and Easter  
opening  
Charge: Free  
Note: All groups should book in advance

### I Sheldonian Theatre

Broad Street, tel: 277299 [www.ox.ac.uk/sheldonian](http://www.ox.ac.uk/sheldonian)  
Open: Mon–Sat 10.00–13.00, 14.00–16.30  
(15.30 in winter),  
Charge: Adults £2.50, concessions £1.50, group  
rate (of 15+) £1.50 per person  
Note: Opening hours vary when the theatre is in  
use for ceremonies, meetings or concerts

### J University Church of St Mary the Virgin

High Street, tel: 279111  
[www.university-church.ox.ac.uk](http://www.university-church.ox.ac.uk)  
Offers excellent panoramic views of Oxford  
Open: Mon–Sat 9.00–17.00 (July/Aug 18.00)  
Sun 12.00–17.00 (July/Aug 18.00)  
Coffee shop with garden, serving  
organic food, 9.30–18.00  
Charge: Charge to climb tower – see church for  
details  
Note: Entrance to the church is free. Principal  
Sunday service is Eucharist at 10.30



Cycladic  
figurine from  
the Ashmolean  
Museum

### K University Museum of Natural History

Parks Road, tel: 272950 [www.oum.ox.ac.uk](http://www.oum.ox.ac.uk)  
The Museum is closed throughout 2013 due to  
essential roof repairs and is expected to reopen early  
in 2014. Please check the website for more details.

### L University Parks

Parks Road, tel: 282040 [www.parks.ox.ac.uk](http://www.parks.ox.ac.uk)  
Open: 7.45 (closing times vary)  
Charge: Free

### M University of Oxford Shop

106 High Street, tel: 247414 [www.oushop.com](http://www.oushop.com)  
The University of Oxford's official store selling a wide  
range of stylish gifts, clothing and more.  
Open: Mon–Sat 9.00–17.30 (July/Aug 18.00)  
Sun (Mar–Dec) 11.00–17.00, Sun and  
Bank Holidays (Jan–Feb) 11.00–16.00

### N University Admissions Information Centre

55 Little Clarendon Street,  
Undergraduates tel: 288000. Graduates tel: 270059  
[www.ox.ac.uk/admissions](http://www.ox.ac.uk/admissions)  
Open: Mon–Fri 9.00–17.00  
An information centre for anyone interested in  
applying for undergraduate or graduate study at  
Oxford, particularly useful for potential applicants, as  
well as teachers, parents and careers advisers

### O Visitor Information Centre

Broad Street, tel: 252200  
[www.visitoxfordandoxfordshire.com](http://www.visitoxfordandoxfordshire.com)  
Open: Mon–Sat 9.30–17.00,  
Sun 10.00–15.30

Opening times are subject to University  
functions, bank holidays, conferences, etc.  
Please check with the place you wish to visit.  
Charges and opening hours are subject to  
change.

The telephone area code for  
**Oxford is 01865**